


ASSEMBLY INSTRUCTIONS

Air Curtain / Air Curtain Sport

Part-no. 09J.121.170.009 for 9J1 Taycan as of MY20
Part-no. 09J.121.171.009 for 9J1 Taycan as of MY20 with SportDesign Front
















Version 02 – 11/2021









Contents

I	Important safety information	3
II	Preparation	4
III	Component identification.....	8
1	Inner component identification	8
2	Outer component identification	8
3	Label for proof of installation.....	9
IV	Paintwork.....	10
1	Material of the component	10
2	Component identification	10
3	Adhesive tape and mounting fixtures.....	10
V	Installation	11
1	Fahrzeug vorbereiten.....	11
2	Installation Air Curtain.....	12

I Important safety information

All of the necessary work must be performed by qualified persons with an appropriate level of expertise.

	<p style="text-align: center;">⚠ WARNING</p> <p>Vehicle lifts with an insufficient lifting capacity can collapse under the weight of the vehicle and crush any persons standing underneath.</p> <p>Compare the weight of the vehicle with the lifting capacity of your vehicle lift. The weight of the vehicle must not exceed the lifting capacity of your vehicle lift. The weight of the vehicle can be found in the vehicle operating manual.</p>	
	<p style="text-align: center;">⚠ WARNING</p> <p>Risk of injury from electric current.</p> <p>Switch off the ignition and disconnect the battery when working on the vehicle electrical/electronic systems.</p>	
   	<p style="text-align: center;">⚠ WARNING</p> <p>Risk of fire and explosion from ignition of windshield cleaning agents/antifreeze and their vapors.</p> <p>Risk of poisoning from ingesting windshield cleaning agents/antifreeze and breathing in their vapors.</p> <p>Risk of injury due to irritation caused by windshield cleaning agents/antifreeze coming into contact with eyes, skin and other parts of the body.</p> <p>Wear protective clothing and safety glasses. Avoid naked flames, fire and sources of ignition. Avoid contact with eyes, skin and other parts of the body. Do not eat, drink or smoke when handling windshield cleaning agents/antifreeze. Do not breathe in vapors and ensure adequate ventilation. Keep windshield cleaning agents/antifreeze only store them in sealable original containers.</p> <div style="display: flex; justify-content: space-around; align-items: center; margin-top: 20px;">    </div>	  

 	<div style="text-align: center;">CAUTION</div> <p>Risk of injury from hands and arms being crushed, cut or lacerated when working with sharp-edged and bulky objects.</p> <p>Wear protective clothing and protective gloves. Keep limbs out of narrow and inaccessible areas of the vehicle and/or avoid dangerous situations by using special tools and suitable aids.</p>	 
	<div style="text-align: center;">CAUTION</div> <p>Risk of injury to back, muscles, joints, tendons and ligaments from lifting and carrying heavy and/or bulky objects.</p> <p>Lift and transport heavy and/or bulky objects with the help of other people and/or with suitable aids.</p>	
	<div style="text-align: center;">NOTICE</div> <p>Before starting the assembly procedure, carefully read the assembly instructions in full and pay attention to the safety information and sequence of the individual operation steps.</p>	
	<div style="text-align: center;">NOTICE</div> <p>All body parts must be prepared and painted in accordance with the attached painting guide.</p>	

II Preparation

Number of people required



For the installation of this product at least one person is needed.

Help and support

If you have any technical queries, please contact us immediately:
support@techart.de

Check TECHART Air Curtain or Air Curtain Sport parts kit for completeness

Quantity	Part number	Part designation
1	09J.121.170.009	Air Curtain
Consisting of:		
2	00091089010031	Bond + Seal, black, tube 70 ml
1	000910219252T	Betaprime 5404, 15ml
1	09J.121.100.077	Part certificate Aero-Kit

and

1	+9J.121.170.CCC	V01: Air Curtain in Custom color
Consisting of:		
1	09J.108.170.998	Paint TECHART Air Curtain L/R, 4 parts
1	09J.121.170.100	Air Curtain right, paintable
1	09J.121.170.110	Air Curtain Inner part, paintable
1	09J.121.170.101	Air Curtain left, paintable
1	09J.121.170.111	Air Curtain Inner part, paintable

or

1	+9J.121.170.001	V01: Air Curtain paintable
Consisting of:		
1	09J.121.170.100	Air Curtain right, paintable
1	09J.121.170.110	Air Curtain Inner part, paintable
1	09J.121.170.101	Air Curtain left, paintable
1	09J.121.170.111	Air Curtain Inner part, paintable

or

1	+9J.121.170.002	Air Curtain glossy
Consisting of:		
1	09J.121.170.100G	Air Curtain right, Visible carbon glossy
1	09J.121.170.110G	Air Curtain Inner part right, Visible carbon glossy
1	09J.121.170.101G	Air Curtain left, Visible carbon glossy
1	09J.121.170.111G	Air Curtain Inner part left, Visible carbon glossy

or

1	+9J.121.170.003	Air Curtain matt
Consisting of:		
1	09J.121.171.100M	Air Curtain Sport right, Visible carbon matt
1	09J.121.171.110M	Air Curtain Inner part right, Visible carbon matt
1	09J.121.171.101M	Air Curtain Sport left, Visible carbon matt
1	09J.121.171.111M	Air Curtain Inner part left, Visible carbon matt

Quantity	Part number	Part designation
1	09J.121.171.009	Air Curtain Sport
Consisting of:		
2	00091089010031	Bond + seal black, Tube 70 ml
1	000910219252T	Betaprime 5404, 15ml
1	09J.121.100.077	Part certificate Aero-Kit

or

1	+9J.121.171.CCC	V01: Air Curtain Sport in Custom color
Consisting of:		
1	09J.108.170.998	Paint TECHART Air Curtain L/R, 4 parts
1	09J.121.171.100	Air Curtain Sport right, paintable
1	09J.121.171.110	Air Curtain Sport Inner part, paintable
1	09J.121.171.101	Air Curtain Sport left, paintable
1	09J.121.171.111	Air Curtain Sport Inner part, paintable

or

1	+9J.121.171.001	V01: Air Curtain Sport paintable
Consisting of:		
1	09J.121.171.100	Air Curtain Sport right, paintable
1	09J.121.171.110	Air Curtain Inner part right, paintable
1	09J.121.171.101	Air Curtain Sport left, paintable
1	09J.121.171.111	Air Curtain Inner part left, paintable

or

1	+9J.121.171.002	V01: Air Curtain Sport Visible carbon glossy
Consisting of:		
1	09J.121.171.100G	Air Curtain Sport right, Visible carbon glossy
1	09J.121.171.110G	Air Curtain Inner part right, Visible carbon glossy
1	09J.121.171.101G	Air Curtain Sport left, Visible carbon glossy
1	09J.121.171.111G	Air Curtain Inner part left, Visible carbon glossy

or

1	+9J.121.171.003	V01: Air Curtain Sport Visible carbon matt
Consisting of:		
1	09J.121.171.100M	Air Curtain Sport right, Visible carbon matt
1	09J.121.171.110M	Air Curtain Inner part right, Visible carbon matt
1	09J.121.171.101M	Air Curtain Sport left, Visible carbon matt
1	09J.121.171.111M	Air Curtain Inner part left, Visible carbon matt

Please use the table to check whether all of the required parts are present.

Once parts have been removed from their original packaging, ensure that they are properly handled and stored.

III Component identification

1 Inner component identification

- i** The inner component designations applied by TECHART must be masked off before painting. These are decisive to TECHART-Support for possible component tracking, complaints or in the event of damage.

- 1 Internal component markings can either be applied directly to the component in the tool or glued in as a label.



Fig. 01

2 Outer component identification

- i** The external component designations applied by TECHART must be masked off before painting. If the external component markings are no longer visible, the component certificate may lose its validity.

- 1 External component identifications are usually attached to the underside of the component in the non-visible area. These can be used as evidence at a traffic control or a technical service since this is a registered TECHART part.



Fig. 02

3 Label for proof of installation

i The labels supplied by TECHART to prove that a TECHART part has been installed must be attached as described below. If the label is not stuck to the car when the TECHART component is installed, the component certificate may lose its validity. Affects components that have no external component identification.

- 1 Labels of a component mounted on the vehicle in front of the B-pillar must be stuck on the inside of the left B-pillar, visible from the front.
- 2 If the component is attached behind the B-pillar, the label is stuck on the inside of the left B-pillar, visible from the rear (see Fig. 03).



Fig. 03

IV Paintwork

1 Material of the component



It is important that the paintwork matches to the surface which will be painted

- 1 Before painting, the material to be painted can be read from the inner component identification.

2 Component identification



All internal and external component identifications must be masked off before painting. These must still be readable after painting in custom color.

- 1 The last layer of clear lacquer can then be applied over the entire surface of the component, in this way deep edges around component identifications can be avoided.

3 Adhesive tape and mounting fixtures



The body tape applied by TECHART is used for later assembly and must be protected over the entire surface before painting.

- 1 The edges of the adhesive body tape must also be free of paint in order not to impair the elasticity of the tape.
- 2 Drilled holes made at the factory that will later be used for screws or rivets may have to be re-drilled to the nominal size depending on the amount of paint.

V Installation**1 Fahrzeug vorbereiten**

i Prior to the assembly place the TECHART product to the desired place to check the part's fitting accuracy.

- 1 Cover the component outline with adhesive tape so as not to damage the paint on the front part.
- 2 Sand all plastic surfaces on the original air curtain. We recommend a grit of the sandpaper of about 300.
- 3 Thoroughly clean and degrease the sanded surfaces. Then wet with Betaprime and let dry. Remove the tape again.



Fig. 04

2 Installation Air Curtain

- 1 Apply PU adhesive to the prepared plastic surfaces. Make sure that no glue is applied to the front part (1).

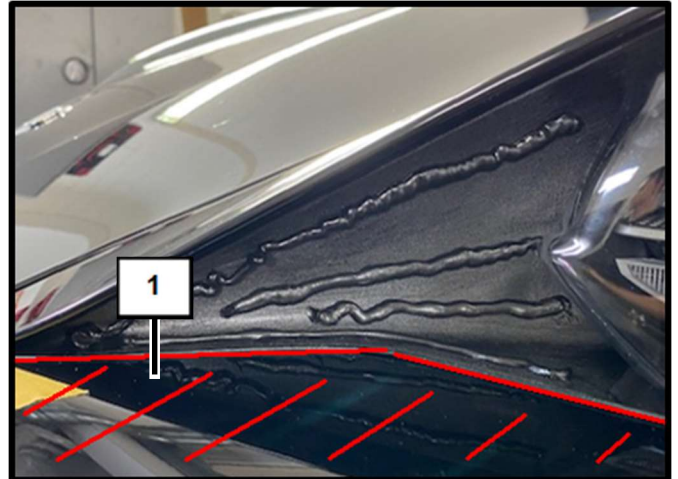


Fig. 05

- 2 Push the Air Curtain inner part behind the headlight and press it on firmly. A plastic block or adhesive tape can be used to help press the inner part against the contour of the vehicle.

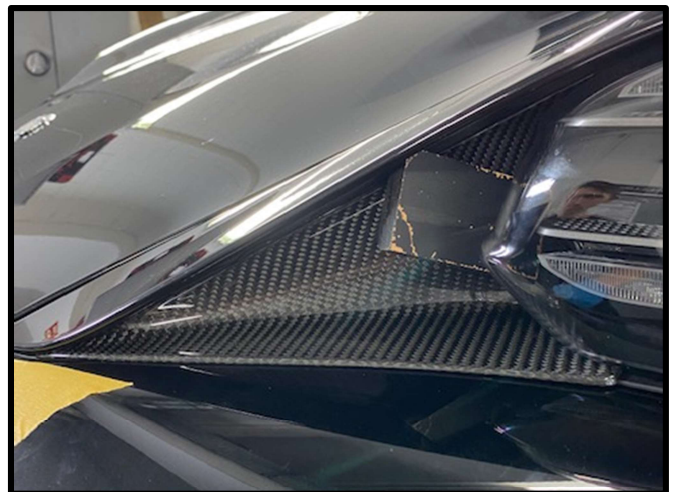


Fig. 06

- 3 Apply PU adhesive to the Air Curtain. Make sure that the edge of the component is covered with a circumferential adhesive line. When viewed from the side, the adhesive must be applied higher than the trimmed edge of the component.

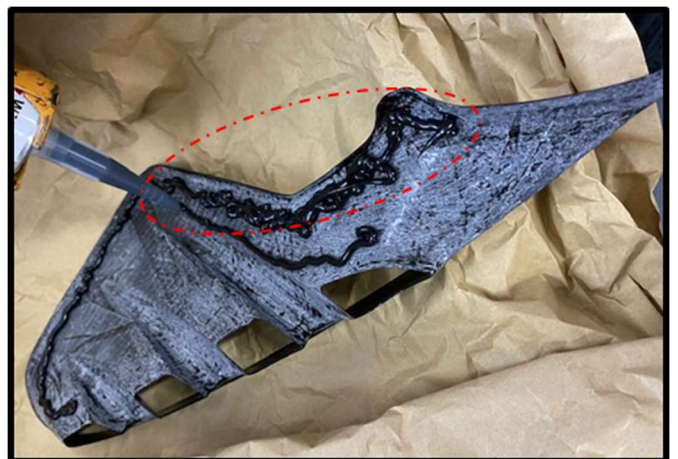


Fig. 07

- 4 Insert the Air Curtain into the front part and press down firmly. Remove escaping adhesive with cleaning agent.
- 5 Press the outer area of the Air Curtain into the contour of the front part and fix it with adhesive tape. The adjustment height of the Air Curtain can be taken from the upper gap (2).

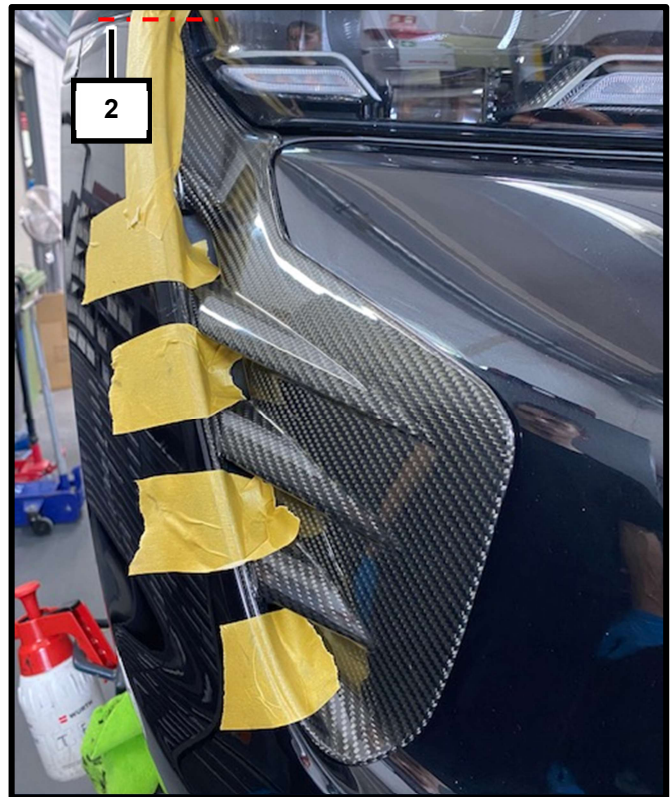


Fig. 08

- 6 Now fix the inner area of the Air Curtain to the front part. Make sure again that the Air Curtain is seated as desired.
- 7 After the PU adhesive has dried, insufficiently wetted adhesive areas or component edges can be peeled off with a small circumferential groove.



Fig. 09

i Press on the parts firmly in the bonding area. Ensure an accurate fit and remove any escaping adhesive with cleaning agent.

i Allow to dry for at least 12 hours.

TECHART

TECHART AUTOMOBILDESIGN GMBH

RÖNTGENSTRASSE 47

71229 LEONBERG / GERMANY

TEL +49 7152 / 9339- 0

FAX +49 7152 / 9339-33

info@techart.de

www.techart.de

Subject to change at any time without prior notice.
Copyright 2021 by **TECHART** Automobildesign GmbH